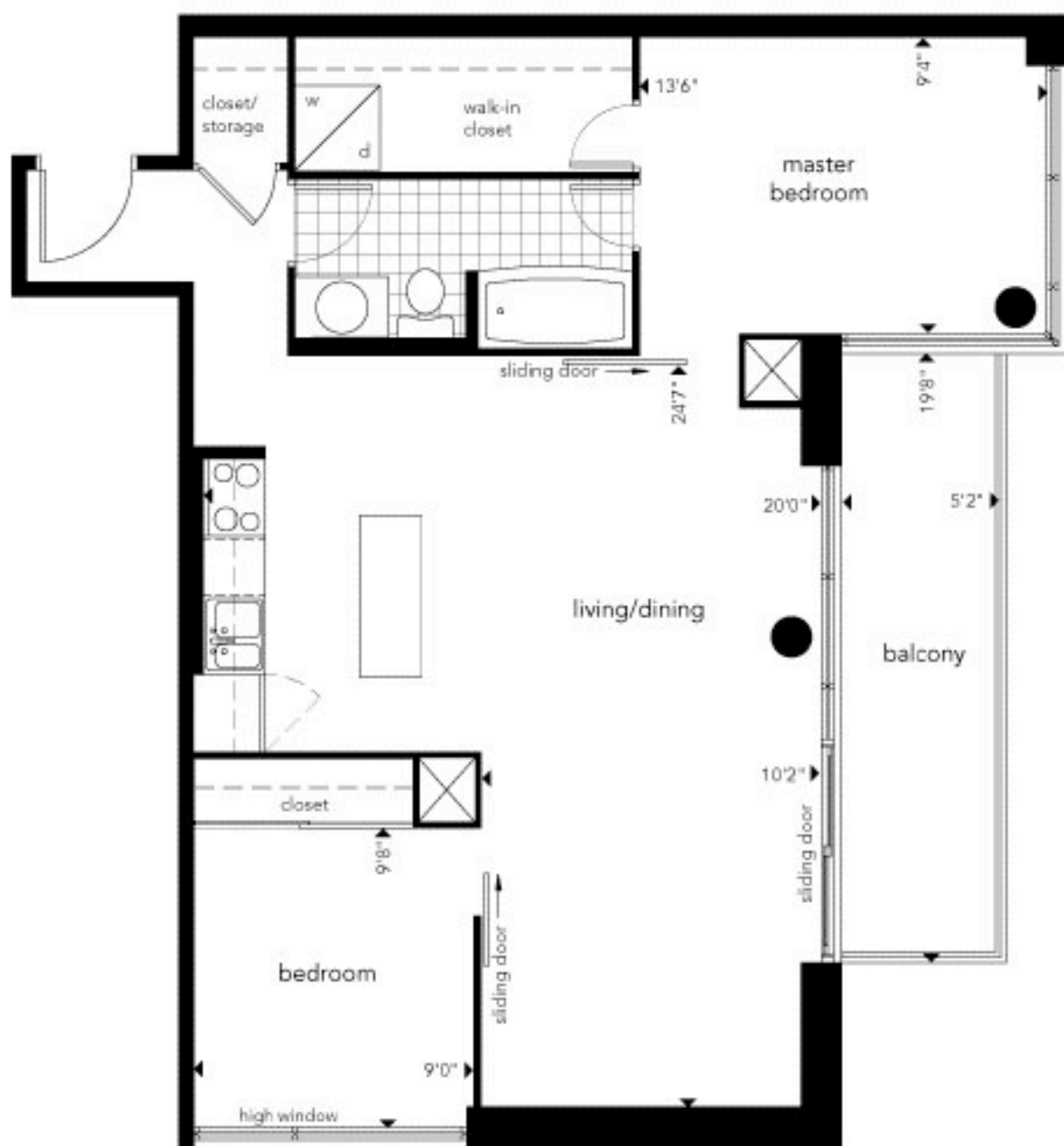


# saarinen

Eero Saarinen dominated American architecture in the 1950s, his sculptural design style finding its most famous manifestation in the TWA terminal at Kennedy Airport, New York.

08 loft | levels 2-7 | 851 sq.ft. | two bedrooms



PHASE TWO



- east and south facing corner loft
- large living area
- large walk-in closet off master bedroom
- open kitchen with island
- large balcony

